



Aphrodite Gold product history

The Aphrodite Gold product is based on a technology that has been applied for a long time, specifically in the ArteColl product. This technology involves the use of alloplastic material as a permanent injectable for cosmetic applications. The alloplastic material in the ArteColl product consists of biocompatible fixed particles of polymethylmethacrylate (PMMA) of a defined size (32-40 µm) and with a completely round and smooth surface. The fixed particles are suspended in atelocollagen so as to make injection possible. Another advantage of using atelocollagen is the degradation speed in the body, which gives the body time to encapsulate the fixed particles and to fix them permanently for permanent cosmetic results.

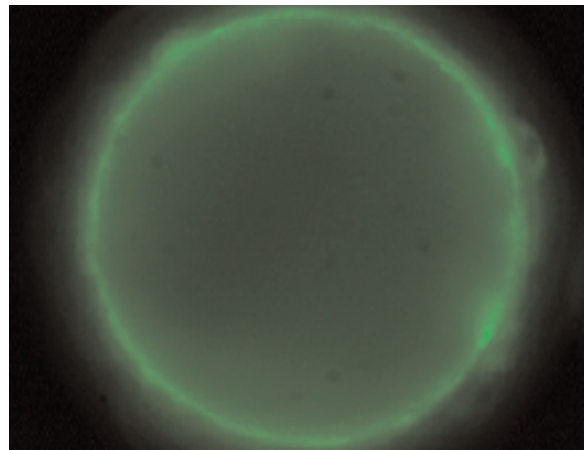
Although Aphrodite Gold basically uses identical substances, the composition of the product has been innovated in such a way that it has obtained an original value, justifying a pending patent. The innovation consists of the fixed particles being covered by a layer of a resorbable albuminous substance with a coarse surface. The principle advantages include: the degradation speed of atelocollagen can be manipulated (i.e. slowed down), so that the fixed particles are less likely to migrate and/or accumulate after they have been injected into the body (they are kept longer in the atelocollagen matrix), and the effect of the treatment remains constant over a longer period of time (due to larger overlapping of degrading atelocollagen and substances produced by the body itself).

For an extensive description of the innovation that has led to the Aphrodite Gold product, please email to info@famemp.com.

Both Aphrodite Gold and ArteColl are based on the same technology, are used in similar application areas and consist of the same basic substances that are known for their long history of safe and effective use in medical applications. The current available clinical data of the mentioned basic materials as well as the ArteColl product are therefore the appropriate sources of clinical information. However, additional clinical evaluation will be conducted in order to found the above improvements of Aphrodite Gold in relation to ArteColl. The latest information on this subject will be updated on our website as soon as it is available.

Furthermore, Aphrodite Gold is supplied in trendy packaging linking a cosmetically more attractive design to a more stable product with ergonomic features.

An injection needle (30G) has been added for specialist purposes (pain reduction for lip corrections).



PMMA microbead coated with atelocollagen

Aphrodite Gold composition

PMMA

The body of the microbeads in Aphrodite Gold is made of polymethylmethacrylate (PMMA). PMMA has been used safely in implants since the 1930s. The beads are very pure and produced by a suspension polymerization method, in contrary to crushing or grinding. The PMMA bodies are covered with bovine collagen from a 3.5% atelocollagen solution. The collagen layer is degraded by the body and replaced by the own body connective tissue. Pre-clinical and clinical studies demonstrate that the size of the microbeads also plays a role in the end result of the implantation by determining the amount of fibrous tissue stimulated by the injected implant. The distinct size of the microbeads avoids phagocytosis by macrophages and local dislocation of microbeads

Atelocollagen

The substance used as a carrier for the microbeads is the collagen derivative atelocollagen. The gel-like properties (thixotropy) of the collagen and its derivatives make it an ideal carrier for Aphrodite Gold (under normal conditions the gel prevents microbeads precipitation, whereas under pressure it becomes liquid, thus enabling injection). Atelocollagen results from the enzymatic removal of the antigenic ends of the collagen molecule. It has been proven that this form of collagen minimizes the risk of allergic reactions. The collagen used as raw material in the preparation of Aphrodite Gold is extracted from bovine skins. Only skins from approved safe sources that have been analysed and declared BSE free by national veterinary authorities are used for the extraction.

How Aphrodite Gold works

Aphrodite Gold differs from the temporary fillers in that the procedure does not yield an immediate result. The objective of Aphrodite Gold is to initiate fibroplasia and collagen synthesis. There will be temporary correction for 2 to 4 weeks and then as the collagen is reabsorbed, their lines will reappear or lips will return to the size they were prior to injection.

After 3 weeks the histological climax of fibroblast activity is reached. A gradual filling of the line will start in about 6-8 weeks. At 3 months the implant is predominantly interwoven with fibroblasts and collagen fibres and the process of fibroplasia is usually complete. Complete correction may require two or three injection sessions.

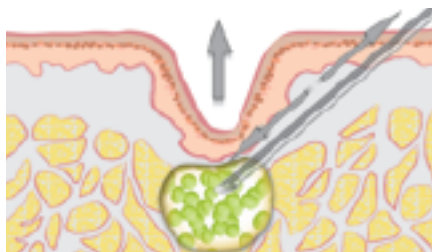
Aphrodite Gold applications

Aphrodite Gold is specifically applied to those treatment areas in which the product distinguishes itself from other injectables. Aphrodite Gold is suited for treating wrinkles in slightly thicker skin, skin imperfections and acne.

- Nasolabial fold
- Mentolabial folds
- Deep wrinkles
- Traumatic scars
- Dermal and subcutaneous skin conditions/imperfections
- Lip augmentation, particularly suited for post cleft lip surgery
- Augmentation of bridge of the nose
- Small facial defects
- Acne scars

Injection technique

The product should be injected into the border of the dermis and subcutaneous fat. The needle (26G) is drawn forwards and backwards (tunneling technique) while maintaining constant pressure throughout the procedure. The product should flow slowly but evenly and without great exertion. The gray of the needle should not shine through the skin so it should not create a "blanching effect". After injection, the product should be moulded with the fingertip to assure an even distribution in the skin. Overcorrection is not advisable.



Wrinkle treatment with Aphrodite Gold

A second implantation may be recommended after 3 months. The volume to be implanted depends on the depth of the wrinkle and is determined on an individual basis.

Since the use of the injection technique is related to the application of a certain product and plays an important role in the end result of the cosmetic treatment, a great deal of attention will be devoted to this matter by organising training courses, cooperating with specialist organisations and supplying auxiliary information.

Literature

1. Hertzog B: L'Artecoll®: historique, composition et aspects histologiques. Technique d'injection, comparaison avec les autres produits. J Med Esth Chir Derm 24: 253, 1997
2. Lemperle G, Romano JJ and Busso M: Soft Tissue Augmentation With Artecoll: 10-Year History, Indications, Techniques, and Complications. Dermatol Surg 29:573, 2003
3. Wiest, LG: Eine neue Perspektive bei der Faltenbehandlung. Dt Derm 46: 511, 1998
4. Feldman SG: Artecoll®, Bioplastique, and beyond. In: Klein AW (Ed.) Tissue Augmentation in Clinical Practice. Procedures and Techniques, Marcel Dekker New York, p. 293, 1998
5. Artecoll: A long-lasting injectable wrinkle filler material: report of a controlled, randomized, multicenter clinical trial of 251 subjects. By Steven R. Cohen, M.D., and Ralph E. Holmes M.D. . Plast Reconstr Surg: 114(4), 964, 2004.
6. Artecoll: a long-lasting injectable wrinkle filler material: report of a controlled, randomized, multicenter clinical trial of 251 subjects. Discussion by Steven Fagien, M.D., and Trevor Born, M.D.



Contact details:

Fame Medical Products bv
Nijmegen, the Netherlands
e-mail info@famemp.com
www.famemedicalproducts.com

Product information :

www.AphroditeGold.com



Fame Medical Products bv